

CLINICAL APPLICATIONS



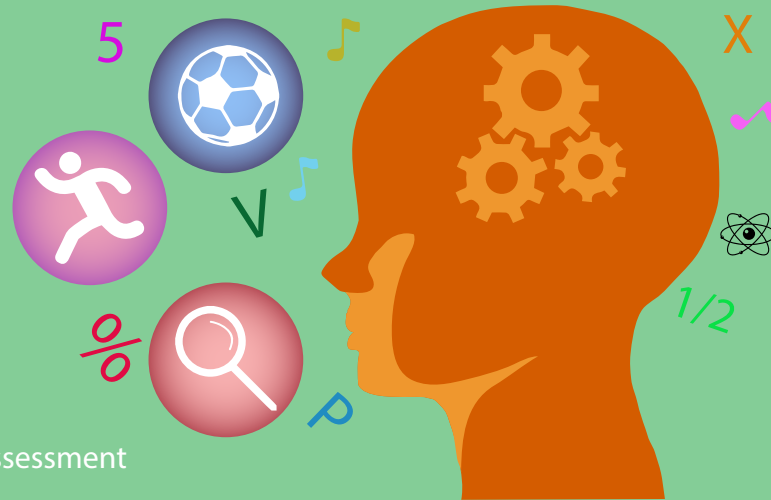
Attentional and movement profile

- Sustained attention
- Divided visual and auditory attention
- Impulsivity
- Reaction time
- Motor activity
- Tendency to distraction
- Attention focus quality

Auditory and visual processing profile

Effect of the distractors

Neuropsychological Assessment



Allows to differentiate between different subtypes of ADHD

Differential diagnosis

*Waiting for data of the study



The clinician can design a treatment more adjusted to the patient attentional capacities

Monitoring of the treatment / intervention

